

**Challenge 1 Maths compulsory**

Create an information leaflet about explaining the relationship between multiplication and division. Include:  
Calculation examples using lower and larger numbers. Questions (calculations and problem solving) Explain how you got the answers.

**Challenge 2 Art/DT**

Create a thoughtful piece of art using the symbol of a poppy as your theme. You can use any art medium and can be your choice of size.

**Woeful  
World  
War I**



**Challenge 3 - Social History**

How did life change in England for people during World War 1? Include some of these themes: jobs, homes, transport, entertainment, education, clothing and healthcare. You decide how to present your learning.

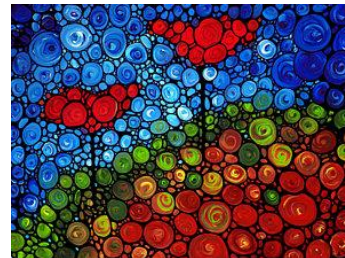
**Challenge 4 - Spelling Compulsory**

Using the word list from the spelling bee - find the meanings of 10 words you do not know and write them in a sentence showing your understanding. Try to create a paragraph using all your words. Make a game with other spelling words e.g. crossword, word search etc. Practise reading and writing spellings over the whole term.

**Challenge 6 - English/History**

Create a non-chronological report about WWI Remember to include:

- Information
- Pictures
- Did you know box
- Sub headings/title
- Introduction and conclusion
- Timeline



**Challenge 5 - PE**

Create a team active game that involves target practice. Devise your own rules and scoring system.



**Challenge 7 - English**

Imagine you are a soldier, write diary entries (for 5 five days) about your experiences in the trenches. You could include a thoughtful poem like the Remembrance poems read on 11<sup>th</sup> November.

**Children do not need to bring in Home Learning on Monday 20<sup>th</sup> November due to Carrot Wood / Activity Week**

**Green Tasks (1 & 4) are Compulsory** and then you can choose from the remaining 5 tasks, so that you complete a total of 5 tasks over the whole term. Two complete pages need to be presented each week to the same standard expected in your school books.

**Home Learning books should be in school EVERY MONDAY**

Date Due In	Challenge	
6.11.17		
13.11.17		
20.11.17 None	-----	
27.11.17		
4.12.17		
11.12.17		