

Extinct &

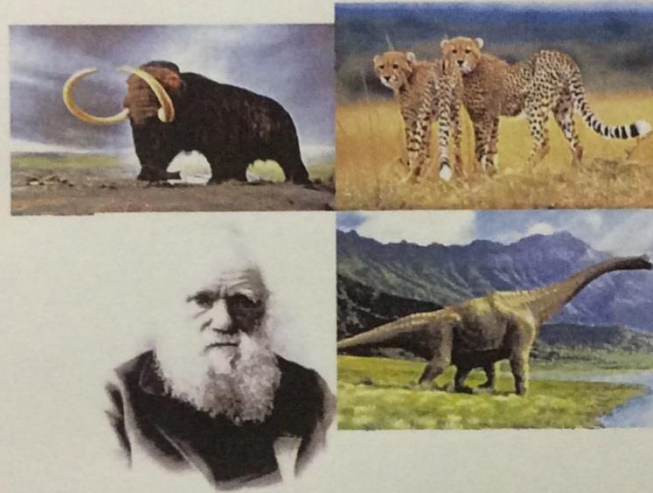
Endangered

Challenge One

Research extinct animals and how we know about their existence. It is up to you, how you present your findings.

Challenge Two

Create a topic picture with your spellings in it.



Tasks 1 is compulsory and then you can choose the remaining task.

Challenge Choice

Create a piece of maths related to the topic, e.g. a pie chart or bar graph about endangered species.

Challenge Choice

Art and design - produce a piece of art or a model linked to the topic.

Challenge Choice

Imagine you are an animal on the verge of extinction Create a poem about how you would be feeling.

Date	Challenged	Checked
8/01/16	Maths & SPaG	
15/01/17		
22/01/17	Maths & SPaG	
29/01/17		
05/02/17	Maths & SPaG	