

If Mary continues to attend for only 90% of the time that she is at Primary school, she will miss a total of 23 weeks, which is equivalent to over half a school year.

September
October
November
December
January
February
March
April
May
June
July

Over half a school year of missed learning

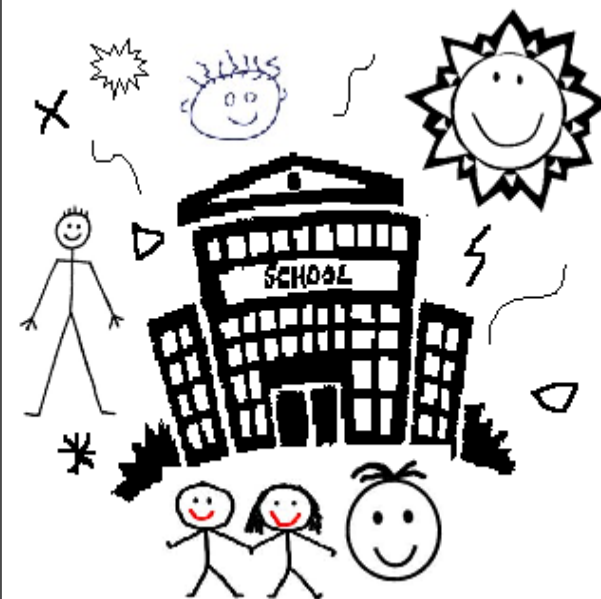
Attendance Percentages

The school year is made up of 190 days.

How much education has your child missed?

95%	=	10 days
90%	=	20 days
85%	=	30 days
80%	=	40 days
75%	=	50 days
70%	=	60 days

School Attendance



Is 90% attendance good enough?

Mary Brown
is in Year 2



90% attendance
means that she is
absent for the
equivalent of one
half-day every
week.

Her attendance rate
is always around
90%. Mrs. Brown
thinks this is pretty
good!

Mon		
Tues		
Wed		?
Thurs		
Fri		

So, what does an
attendance rate of
90% look like?

Absent half a day
every week!

In Year 1, Mary's
90% attendance
rate means that she
has missed the
equivalent of four
whole weeks of
lessons in the
school year.

