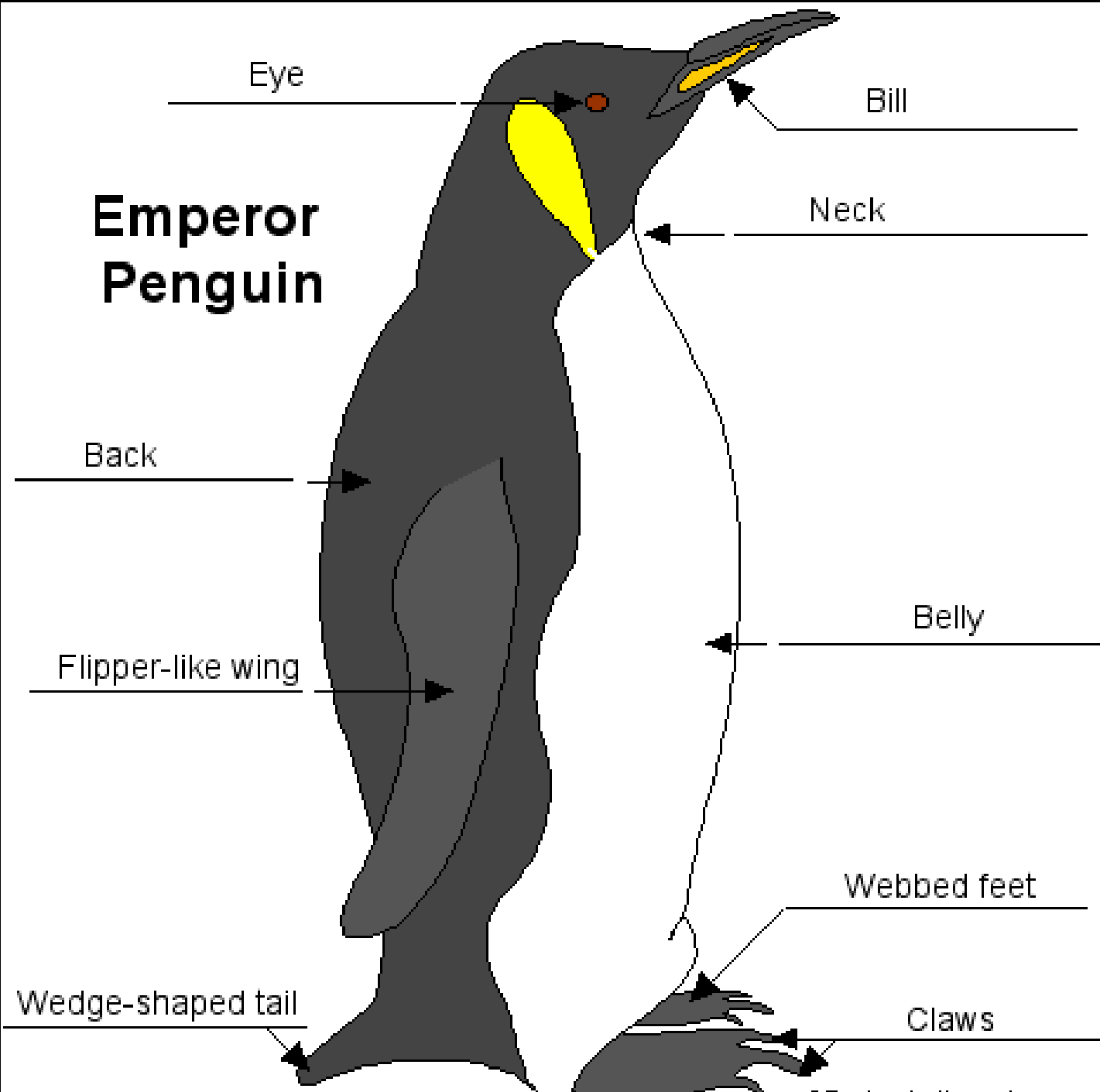


The Emperor Penguin



Emperor Penguin



Eye

Bill

Neck

Back

Belly

Flipper-like wing

Webbed feet

Wedge-shaped tail

Claws

- Emperor Penguins are big. They have yellow patches around their ears and throat and they have long narrow beaks.



Emperor Penguins are the biggest Penguins. They are 120 cm tall and can weigh 40 kilograms..

- Emperor Penguins are very tough and strong.
- Emperor Penguins usually live to about 15 - 20 years of age.
- They live longer than other penguins despite living in the coldest place. They can live up to 50 years-old.

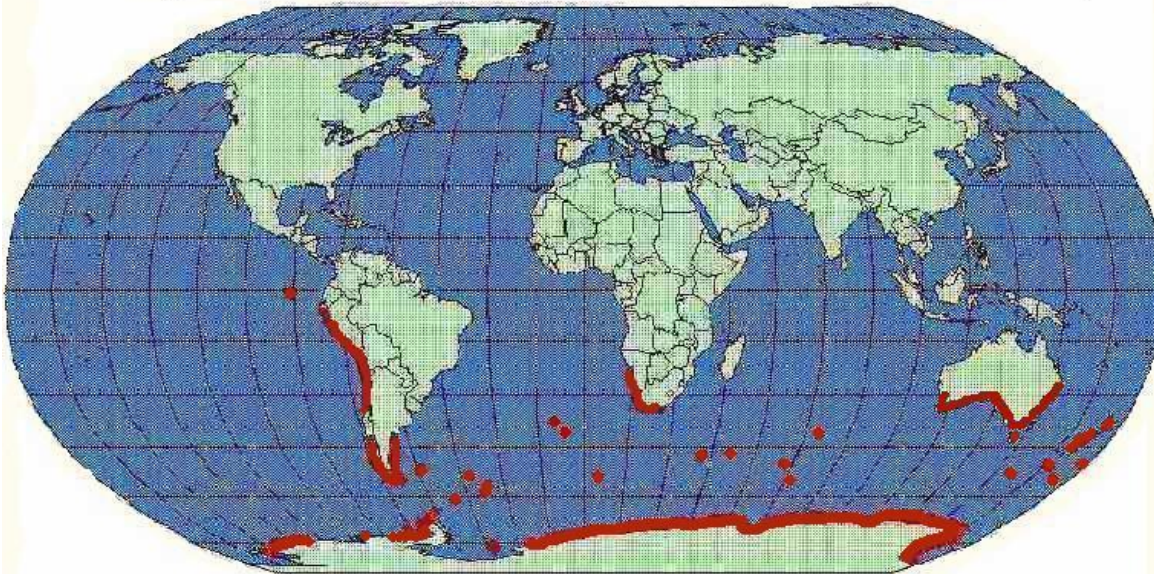


Where do they live?

- Emperor Penguins love ice and they love the sea.
- Penguins live in the southern half of the world.
- You can find Emperor Penguins in Antarctica. Antarctica is a very large area covered in ice.

It's too cold for people, but perfect for penguins.

World Penguin Distribution marked in red - click on map for information on each region



Antarctica

How do they keep warm?

They have thick layers of fat and feathers. This helps to keep their bodies warm.



Emperor penguins also stay together in large groups, taking turns to be on the outside, then on the inside, where it is warmer.



Emperor Penguins swim with their flippers. They use their tail to steer themselves in the water.

Emperor Penguins can dive deeper than any other bird. They can stay under for more than 20 minutes.



Penguin families

Emperor Penguins live together in groups of families. The father penguin carries the egg on his feet. All the adult penguins help look after the all baby penguins. A group of penguin families is called a colony.



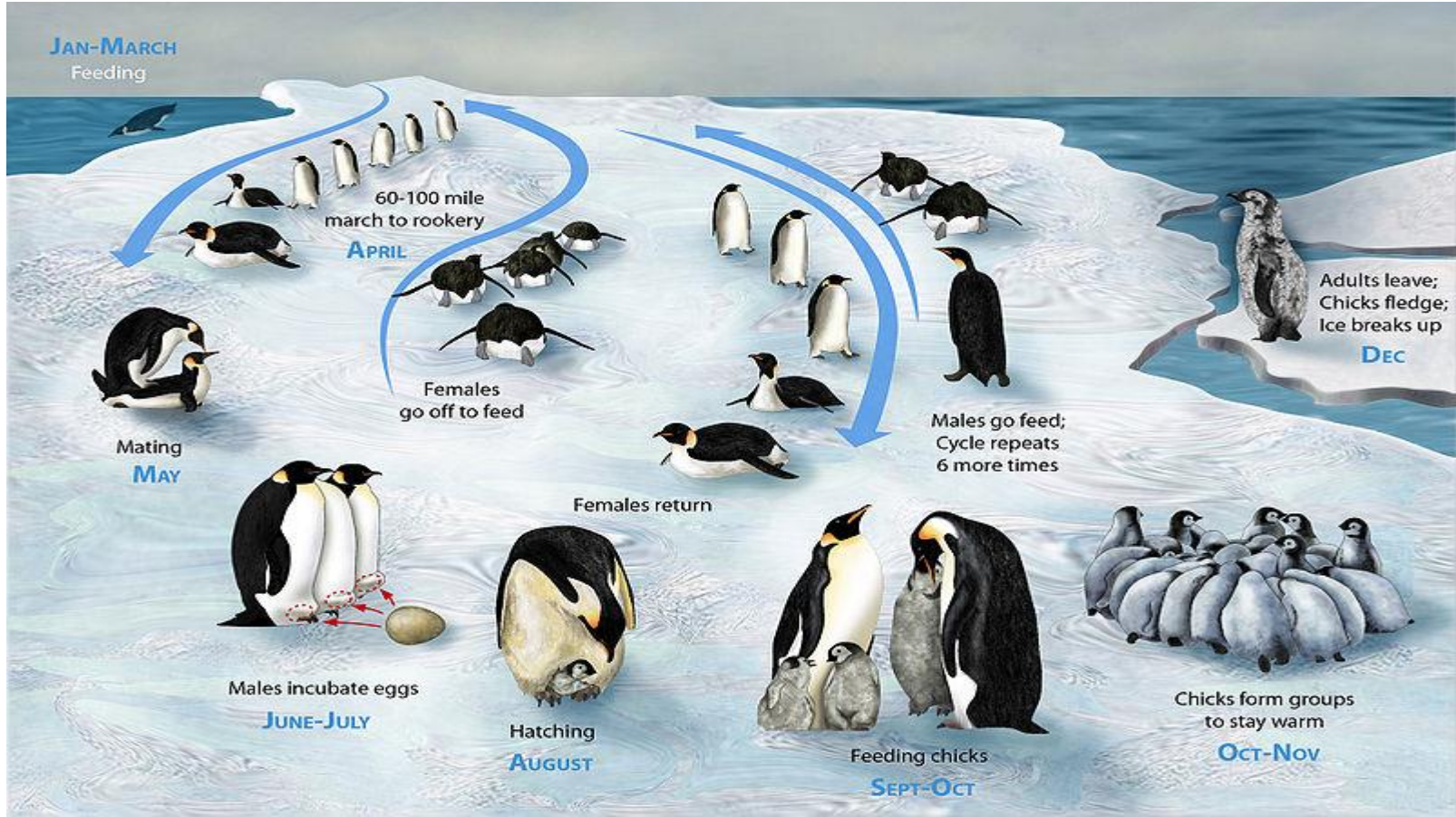
Emperor penguin egg at
12cm long

- **How do they keep their chicks warm?**

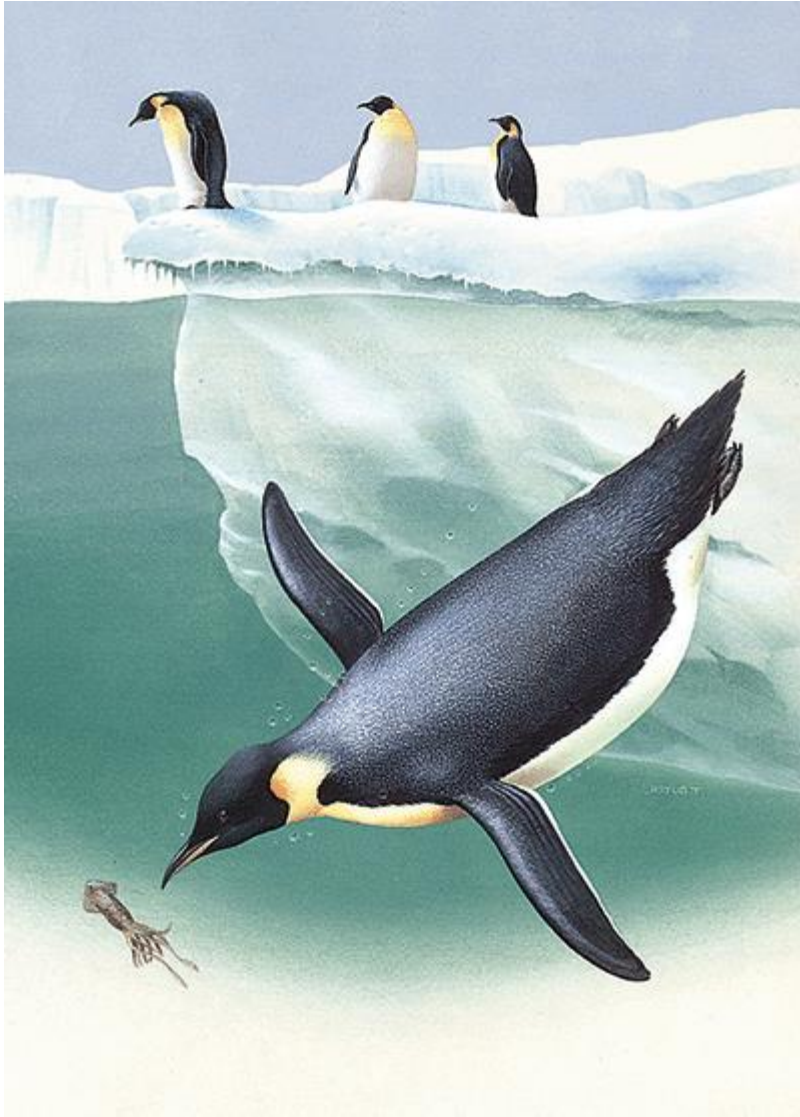
Mothers keep their chicks warm in their brood pouches. Outside they would die in a few minutes.



- The female lays a single egg, which is incubated by the male while the female returns to the sea to feed; parents subsequently take turns foraging at sea and caring for their chick in the colony.



What do penguins eat?



Emperor penguins like to eat fish but they also eat squid.



Emperor Penguin quiz

- Where do Emperor Penguins live?
- What do Emperor Penguins look like?
- What do you call a group of Emperor Penguin families?
- How long do Emperor Penguins live?
- How do Emperor Penguins keep their chicks warm?