

Year 2 Week 6 Remote Home learning Monday 5<sup>th</sup> October 2020

| Day                | English  | Maths  | Topic   |
|--------------------|--|--|---|
|                    | Play on spelling shed through the week.  | You could use the Topmarks website for some interactive games<br><a href="https://www.topmarks.co.uk/maths-games/5-7-years/counting">https://www.topmarks.co.uk/maths-games/5-7-years/counting</a>   | All creatures great and small   |
| M 5 <sup>th</sup>  | Spellings for the week:<br><b>arm, darker, March, flower, person - put - my</b><br>We are looking at the phonemes; <b>ar and er</b><br><br>We are focusing this week on reading skills basic sentence structure, punctuation and handwriting.<br><br>What is a verb? It is a doing word. Read through the verb powerpoint.<br><br>On the sheet read the sentences, find the verbs and write your own sentences using correct punctuation and neat cursive handwriting. | <a href="https://whiterosemaths.com/homelearning/year-2/week-3/">https://whiterosemaths.com/homelearning/year-2/week-3/</a><br><br>Look at this link above. Each day complete a new video. Pause the video each time he asks a question so you have time to think about the answer and write it down in your book.<br><br>Complete the sheets available separately.<br><br>Monday- <b>Tens and ones using addition</b> | <b>Science</b><br>Which animal families are invertebrates?<br><a href="https://classroom.thenational.academy/lessons/which-animal-families-are-invertebrates-ctgk4r">https://classroom.thenational.academy/lessons/which-animal-families-are-invertebrates-ctgk4r</a><br><br>Follow the instructions on the video and take the quiz.<br><br>Complete the classifying insects sheet below.   |
| T 6 <sup>th</sup>  | Read through the adverb powerpoint.<br><br>On the sheet read the sentences, find the adverbs and write your own sentences using correct punctuation and neat cursive handwriting.  | Tuesday - <b>Using a place value chart</b><br><br><b>Watch video then complete task sheet.</b>   | <b>Art</b><br>Paint/draw a picture of an animal. Look at a real animal if you have one at home or look at a photo of one.   |
| W 7 <sup>th</sup>  | On the sheet find verbs and adverbs. Write own sentences using correct punctuation and neat cursive handwriting with appropriate nouns and adjectives with correct spelling.   | Wednesday - <b>Compare objects</b>   | <b>Music</b><br><a href="https://www.maestroclassics.com/peter-and-the-wolf">https://www.maestroclassics.com/peter-and-the-wolf</a><br>Watch the video about Peter and the wolf and then match up the characters to the correct musical instrument.<br><a href="https://www.youtube.com/watch?v=oX9ww0C1fN0">https://www.youtube.com/watch?v=oX9ww0C1fN0</a><br><b>Watch the orchestra play together. What do you think about this music?</b> |
| Th 8 <sup>th</sup> | Reflect on your science learning. What information do you know about animals. Write sentences about animals. Remember full stops and capital letters.  | Thursday - <b>Compare numbers</b>  | <b>PE</b> – get physical get your heart racing. Run, jump, hop and play some active games.<br><br>Use a ball (or rolled up socks) to roll a ball onto a target (paper/towel) like curling.<br><br>Join in with some super movers<br><a href="https://www.bbc.co.uk/teach/super-movers/ks1-maths-length-height/zdrx92p">https://www.bbc.co.uk/teach/super-movers/ks1-maths-length-height/zdrx92p</a>   |
| F 9 <sup>th</sup>  | Test your spellings at the end of the week. Play on spelling shed. Write sentences using your spelling words.  | Friday - <b>Order objects and numbers</b>  | <b>Forest school</b><br>Hunt for mini beasts outside if you can. Try to identify them. You could use your Science sheet. Can you name any of the plants you see outside?<br>Watch the video to learn about minibeasts<br><a href="https://www.youtube.com/watch?v=T-OUdFXuq88">https://www.youtube.com/watch?v=T-OUdFXuq88</a>  |



Music – Peter and the Wolf

Match up the instruments with the characters from the story.

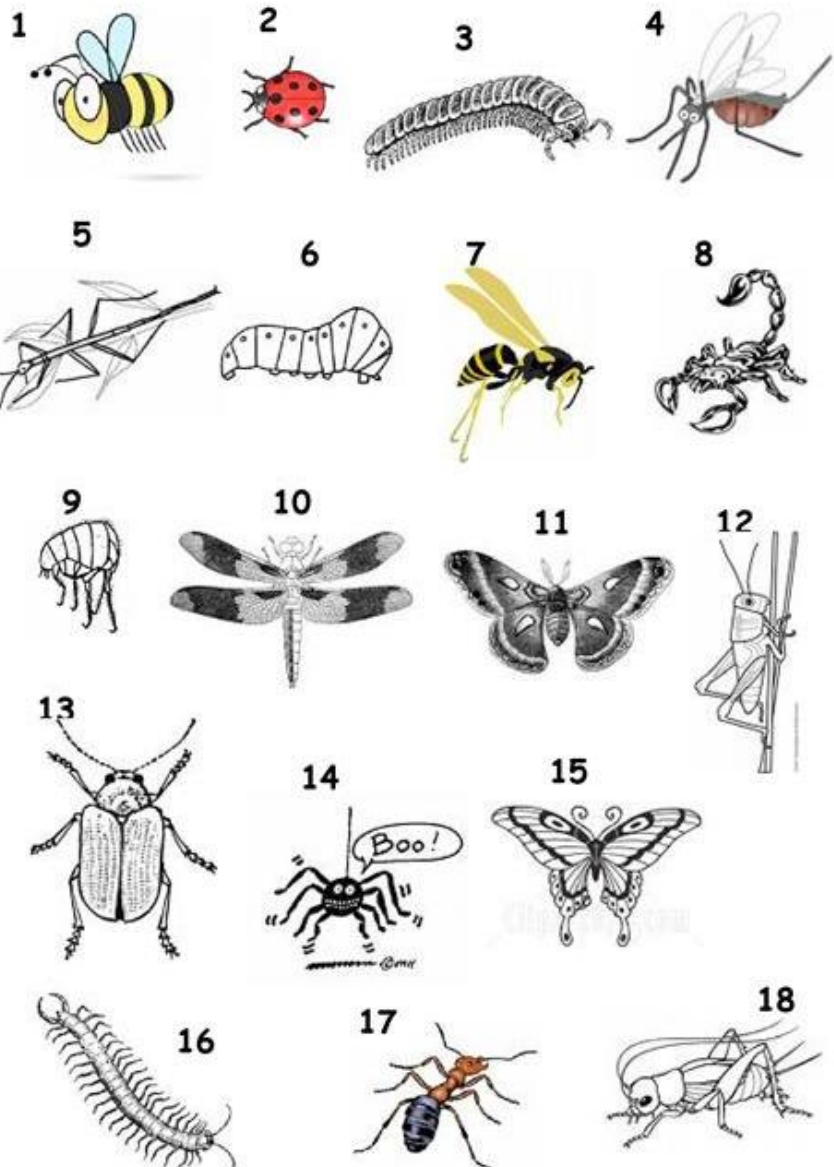


Science – Name the mini beasts in the picture.

Vocabulary Worksheet - Insects & Creepy Crawlies

Match words and pictures

|              |                          |
|--------------|--------------------------|
| ant          | <input type="checkbox"/> |
| bee          | 1                        |
| beetle       | <input type="checkbox"/> |
| butterfly    | <input type="checkbox"/> |
| caterpillar  | <input type="checkbox"/> |
| centipede    | <input type="checkbox"/> |
| cricket      | <input type="checkbox"/> |
| dragonfly    | <input type="checkbox"/> |
| flea         | <input type="checkbox"/> |
| grasshopper  | <input type="checkbox"/> |
| ladybird     | <input type="checkbox"/> |
| millipede    | <input type="checkbox"/> |
| mosquito     | <input type="checkbox"/> |
| moth         | <input type="checkbox"/> |
| scorpion     | <input type="checkbox"/> |
| spider       | <input type="checkbox"/> |
| stick insect | <input type="checkbox"/> |
| wasp         | <input type="checkbox"/> |



Write the words (more than 1 answer possible)

1. It eats insects : .....
2. It stings : .....
3. It jumps : .....
4. It lives on other animals : .....