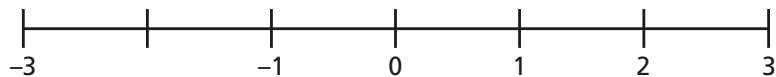
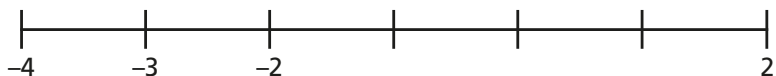


1 Complete the number lines.

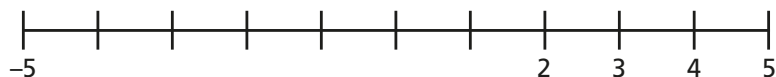
a)



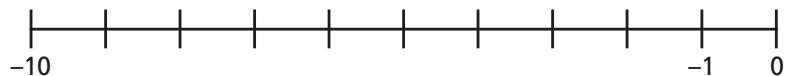
b)



c)



d)



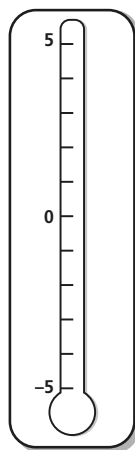
2 Complete the temperature labels on the thermometer.

Circle the warmer temperature in each pair.

a) 2°C 4°C d) -3°C 0°C

b) 5°C 0°C e) 4°C -1°C

c) -1°C 1°C f) -4°C 1°C

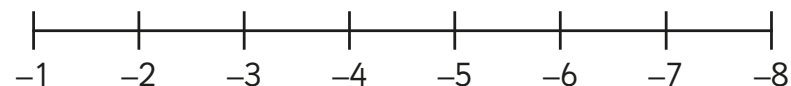


3 a) Tommy is counting backwards in 1s starting from 4
Write the first five numbers that Tommy will say.

b) Annie is counting backwards in 2s starting from 4
Write the first five numbers Annie will say.

c) Alex is counting forwards in 3s starting from -4
Write the first five numbers Alex will say.

4 Rosie has labelled a number line.



What mistake has Rosie made?

5 Write the next three terms in each sequence.

a) 20, 15, 10 ... d) 7, 4, 1 ...

b) $-10, -8, -6$... e) 75, 50, 25 ...

c) $-7, -5, -3, \dots$

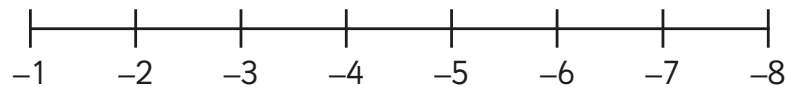
6 The temperature in London is 5°C .

a) The temperature in Birmingham is 8°C warmer than London.
What is the temperature in Birmingham?

b) The temperature in Manchester is 8°C colder than London.
What is the temperature in Manchester?

- 3** a) Tommy is counting backwards in 1s starting from 4
Write the first five numbers that Tommy will say.
- b) Annie is counting backwards in 2s starting from 4
Write the first five numbers Annie will say.
- c) Alex is counting forwards in 3s starting from -4
Write the first five numbers Alex will say.

- 4** Rosie has labelled a number line.

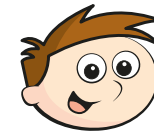


What mistake has Rosie made?

- 5** Write the next three terms in each sequence.
- a) 20, 15, 10 ... d) 7, 4, 1 ...
- b) $-10, -8, -6$... e) 75, 50, 25 ...
- c) $-7, -5, -3,$...

- 6** The temperature in London is 5°C .
- a) The temperature in Birmingham is 8°C warmer than London.
What is the temperature in Birmingham?
- b) The temperature in Manchester is 8°C colder than London.
What is the temperature in Manchester?

- 7** Teddy is counting backwards.



three, two, one,
negative one,
negative two ...

What mistake has Teddy made? Talk about it with a partner.

- 8** Whitney is counting backwards in 10s from 37



37, 27, 17,
7, -7 , -17

Is Whitney correct?

Write the numbers she should say, to check your answer.