

# WEST BOROUGH

## PRIMARY SCHOOL



### Prospectus 20120-21

#### Headteacher:

Mrs Ashley Crittenden

#### Deputy Headteachers:

Mrs Paula Martin

Mrs Lisa Edinburgh

#### Chair of Governors:

Mrs Katherine Atkinson

**Greenway  
Maidstone  
KENT  
ME16 8TL**

**Tel: 01622 726391**

**Fax: 01622 729512**

**Email: [office@west-borough.kent.sch.uk](mailto:office@west-borough.kent.sch.uk)**



We would like to extend a warm welcome to all children, parents and carers to West Borough Primary School. We are very proud of our inclusive school, our dedicated team of staff, governors and wonderful children.

We are a 2 form entry school with a maintained Nursery. As well as providing a fun, engaging and challenging curriculum, we pride ourselves on the learning environment we create and the pastoral care we offer; all children should be happy and successful during their time at West Borough Primary School.

Everything we do in school is underpinned by our Core Values and our Vision:

**Equality   Responsibility   Respect   Resilience  
Challenge**

At West Borough Primary School we instil a respect for others and a fascination with the world around us. Within our creative environment, we foster life skills.

This gives us the opportunity to learn, take responsibility and to become independent citizens.



**‘Be kind, be safe, be responsible and embrace challenge’**

**[www.west-borough.kent.sch.uk](http://www.west-borough.kent.sch.uk)**



# Our School Day

Our school is open from 7.30am to 6.30pm

Years R, 1 & 2                      8:50am to 3:10pm                      (*Gates open at 8.30am*)

Years 3, 4, 5 & 6:                      8.50am to 3:15pm

Nursery:                      8.35am to 3.20pm

The children can come on to the playground from **8.30am**. The classroom doors are opened at **8:40am** and the children go into their classrooms where they engage in an activity. The register is taken at **8:50am**.

Year groups are grouped into teams, with each team being led by a member of the Senior Leadership Team. Nursery and Year R are led by Mrs Jury-Sofi; Years 1, 2 and are led by Mrs Everest; Years 3 and 4 are led by Mrs Walker and Years 5 and 6 are led by Mrs Miranda. The Headteacher, Deputy Headteachers, and teachers will be happy to answer your questions when you drop off and collect your child.

**Nursery** - Children are able to come to the Nursery from the age of three. We offer sessions in a flexible way between the hours of 8.35 am and 3.20pm. All children are entitled to 15 hours of *free* nursery care each week, the term after they turn three. If both parents are working, you may be entitled to 30 hours free childcare. The Nursery is staffed by a qualified teacher, a Nursery Nurse and 2 TAs. Please see our Nursery Prospectus for more information.



**Acorns Club** - We run our own wraparound care at West Borough. Breakfast Club runs from 7:30am and After School Club runs until 6:00pm

Breakfast Club—£3.50 per day

After School Club—£10.00 per day



Breakfast Club

***“From breakfast club to the senior team, they have all shown compassion and understanding...A fantastic happy school.”  
Parent Survey***



# Our Uniform



We believe school uniform promotes a sense of pride in our school.

We only ask that you purchase school jumpers or cardigans and PE kits from us, however, we also sell coats, hats and book bags.

A price list and order form can be found on our website.



## Partnership with Parents

We involve parents and carers as partners in their children's learning and work together in supporting pupils to achieve their potential through continual communication with parents, via workshops, learning conferences and reports.

We have many ways for parents and carers to keep in touch with what is happening in school; via our website, Twitter @BoroughWest, Instagram @westboroughprimary, face to face conversations, home-school contact books and newsletters to name a few. At West Borough Primary School, we are proud of our achievements and share in our successes with friends, family and the community. Through newsletters and celebration assemblies we ensure children and adults alike are congratulated.

***“Parents are viewed as an essential part of their children's development and parents say their views and input are valued.”***

***Ofsted, June 2017***

We have an active PTFA who fully support the school and raise funds. More recently they've helped fund iPads and new school Sports kits. They are currently fundraising to develop our outside areas.





# Teaching and Learning

Our skills based curriculum is both engaging and challenging. Teachers plan to meet the needs of all learners through exciting lessons which link, wherever possible, to real-life outcomes. In Term 3, for example, every child created a piece of artwork based on a class poem, which was then displayed in our school Art Gallery.

***“Teachers have established excellent relationships with pupils so that support and guidance is very effective. They know their pupils exceptionally well and encourage them to contribute to lessons. As a result, pupils want to learn.”***

***Ofsted June 2017***

As an inclusive school, we recognise that some children may require extra support or have a particular talent which needs enhancing at sometime in their school life. This support can be for educational, physical, behavioural, social or emotional needs. Each child is treated as an individual and their learning personalised through targets and intervention programmes.

Within our school we have an ASD Satellite run by Bower Grove School staff for pupils on the autistic spectrum in Years 3 to 6. Pupils are fully supported and integrate into the mainstream classroom as and when appropriate.



*Our Thrive Hive. This is a place where children's well-being is the focus.*

## School Policies

The school continually updates policies and procedures in line with National and Local Authority guidelines. Copies of all statutory policies can be found on our website. Alternatively, the office staff will be happy to provide copies on request.

When updating school policies, we consult with staff, Governors, parents and pupils as appropriate.

West Borough Primary School is committed to safeguarding and promoting the welfare of children and expects all staff and volunteers to share this commitment.

We have a number of policies and procedures in place that contribute to our safeguarding commitment, including our Child Protection Policy, acceptable usage policies for ICT and mobile phones which can be viewed in the Policies section of our website.

Expectations of all stakeholders are also laid out in our Family Partnership Agreement.



# Our Community

Our school serves a wide and varied community. We work together to enable learning opportunities within our community and beyond. This includes visits linked to topics, extension activities at local secondary schools and members of our community supporting in school. We support local charities and events, often organised by our School Learning Council; we also develop enterprise opportunities linked to future careers.



***“Pupils’ personal development is exceptional because the school provides very strong support and well-balanced opportunities for pupils’ spiritual, moral, social and cultural development.”***

***Ofsted June 2017***

# Our Learning Environment

Our stimulating and creative environment enhances learning. Whether inside or outside, we believe learning should be fun.

We provide a creative curriculum which follows a theme, whilst ensuring all pupils have a clear understanding about each subject. All learning is based around this theme where possible, with pupils taking the lead in their learning. Our displays support pupils’ learning, whilst our corridor and hall displays reflect our finished learning!

Lunchtimes at West Borough are action packed too, with many activities to choose. These activities are organised and run by our Sports Ambassadors.

We also offer a wide range of extra-curricular activities from cake decorating and knitting to basketball and girls football.

These take place after school and are run by school staff.



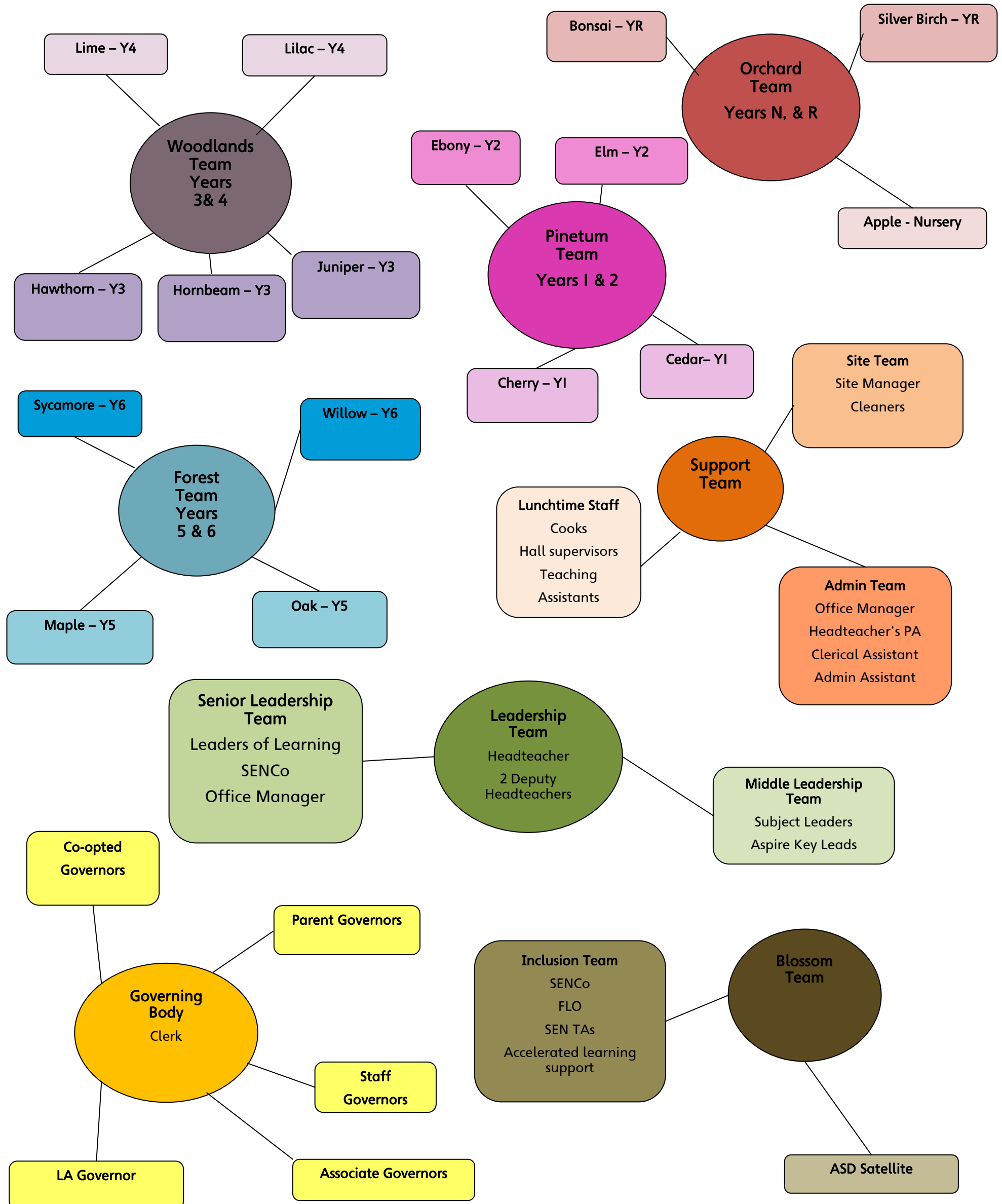
***“Pupils are friendly, polite and respectful. They feel safe in their school and have built very trusting relationships with staff.”***

***Ofsted June 2017***

# Staff Structure

We have a large team of enthusiastic and hard working staff who are dedicated to ensuring your child's time at West Borough is a happy and fulfilling one. Every class has a full-time equivalent teacher and teaching assistant.

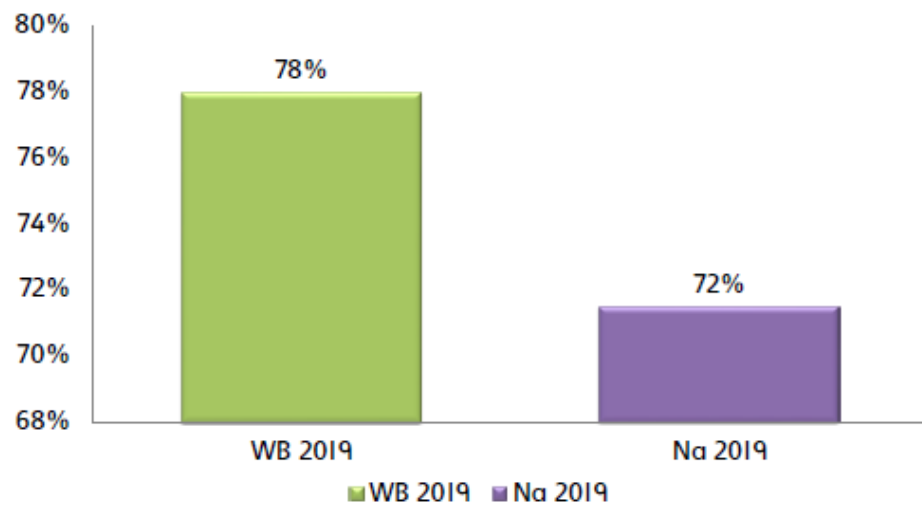
Our 'open door' policy ensures there is always a member of staff to speak to.



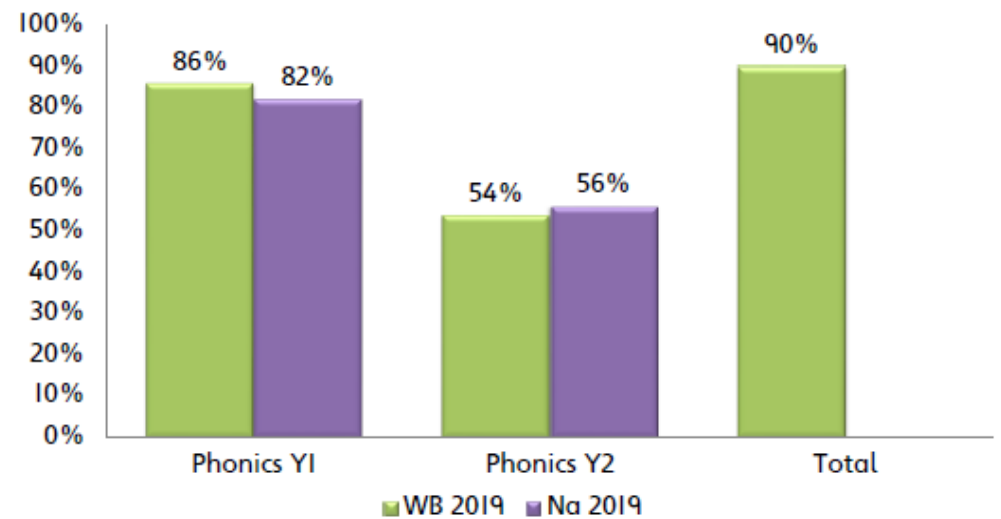
# Achievement

We are continually striving for improvement, which we believe is reflected in the outcomes individual pupils achieve. We are incredibly proud of our **Outstanding** grading in our Early Years and how we perform compared to other schools nationally, across the school. Please note that due to the Coronavirus Pandemic, all figures are from 2019.

## EYFS – Good Level of Development

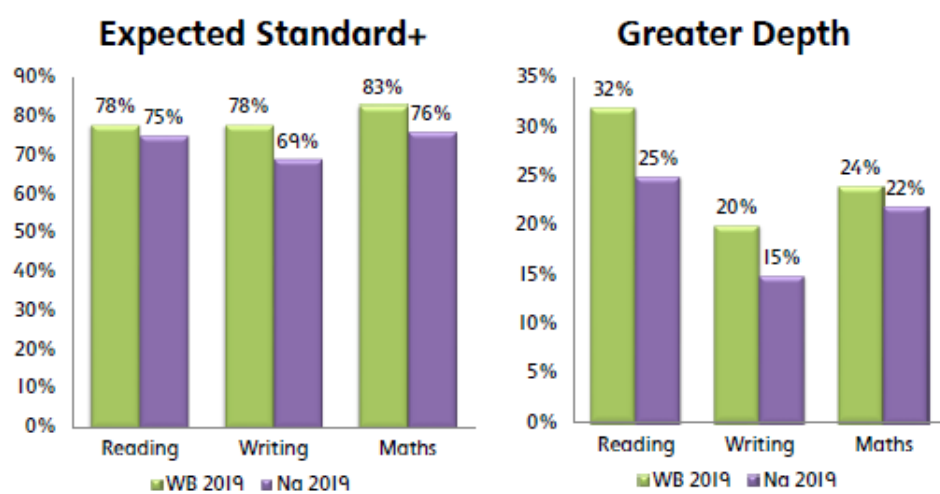


## KSI - Phonics

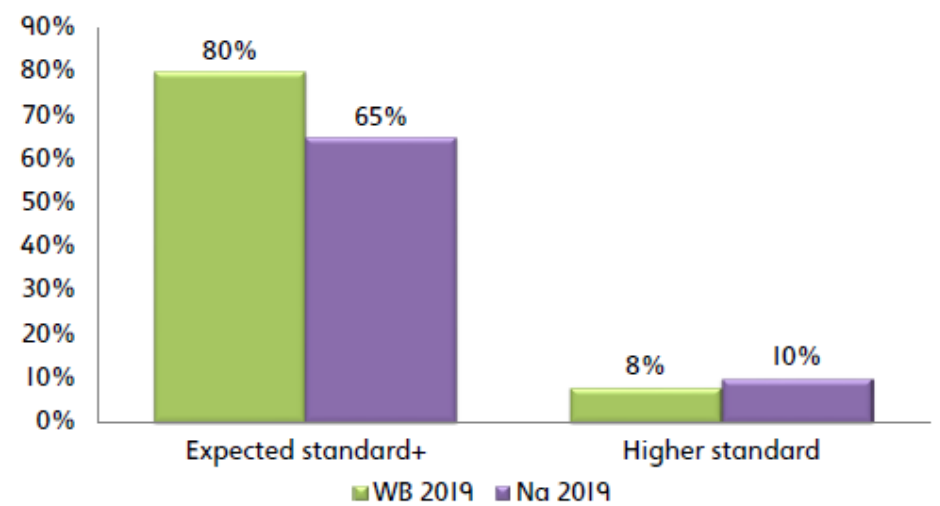


In 2019 we (WB 2019) performed above national expectations (NA 2019) in all Key Stages and all subjects in the vast majority of subjects and Key Stages.

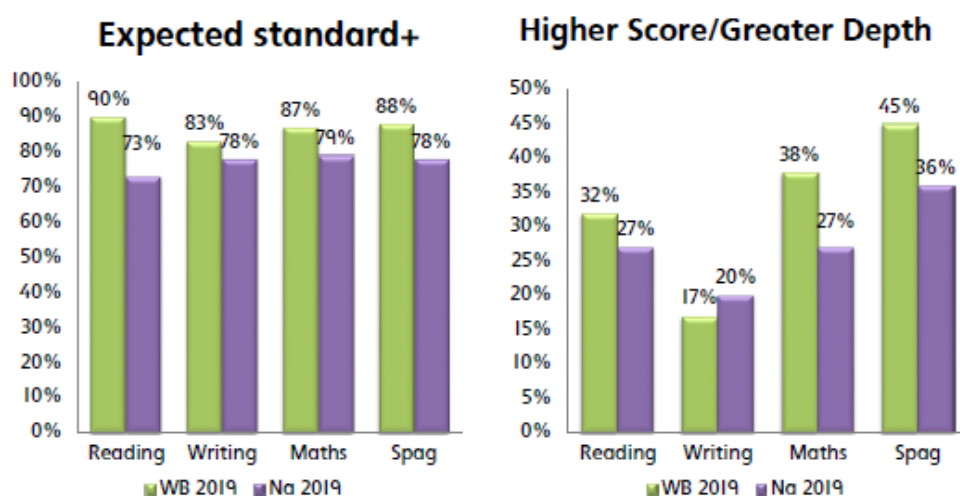
## KSI Attainment



## KS2 – Combined Attainment



## KS2 - Attainment



## KS2 – Progress



More information about the way we assess children now, can be found on our website.



# Term Dates 2020-21

## TERM 1

Tuesday 2nd September – Friday 23rd October 2020

October Holiday - Monday 26th October – Friday 30th October 2020

## TERM 2

Monday 2nd November – Friday 18th December 2020

Christmas Holiday - Monday 21st December 2020 – Friday 1st January 2021

## TERM 3

Tuesday 5th January – Friday 12th February 2021

February Holiday - Monday 15th February – Friday 19th February 2021

## TERM 4

Monday 22nd February – Thursday 1st April 2021

Spring Holiday - Friday 2nd April – Friday 16th April 2021

## TERM 5

Monday 19th April – Friday 28th May 2021

May Holiday - Monday 31st May – Friday 4th June 2021

## TERM 6

Tuesday 8th June – Wednesday 21st July 2021

*There will be 5 Staff Development Days during the year when the school will be closed to pupils.*

*1st September 2020, 2nd October 2020, 4th January 2021 , 7th June 2021,  
2nd July 2021*