

Design Technology

Term 3 – Chocolate
Thursday 4th February 2021

Design Technology

Our topic this term is...



How many chocolate products can you list

What would your dream chocolate bar look like? What would be in it?

We are going to make a chocolate product of our own...

Design Brief – To make a chocolate product and packaging that would make Willy Wonka proud.

DT

Design Brief – To make a chocolate product and packaging that would make Willy Wonka proud.

Look at this website for some chocolatey ideas.

<https://www.bbcgoodfood.com/recipes/collection/kids-chocolate-recipes>

Speak with your grown up at home to help select a recipe you would like to use.

Some ideas for you...



- Sweet Shop Bark

<https://www.bbcgoodfood.com/recipes/sweet-shop-bark>

- Chocolate Crunch Bar

<https://www.bbcgoodfood.com/recipes/chocolate-crunch-bars>



- Chocolate Cornflake Cakes

<https://www.bbcgoodfood.com/recipes/cooking-kids-chocolate-cornflake-cakes-0>



You may like to choose a recipe but add some of your own ideas too!

DT

Design Brief – To make a chocolate product and packaging that would make Willy Wonka proud.

Design and plan the product – we will be making it next week.

- What are you going to make?
- Will you change any of the ingredients?
- How will you use the ingredients?
- What type of chocolate will you use?

Ingredient	Reason
eg Marshmallows	To add a chewy texture to my bar
eg Smarties	To add some crunch to my bar
eg White Chocolate	To add a different colour to my bar

Size	
Shape	
Portion size	

Draw a picture of your product.

DT

Design Brief – To make a chocolate product and packaging that would make Willy Wonka proud.

Name your product.



Alliteration

Roald Dahl Language

Rhyme

Adjectives

Your name?

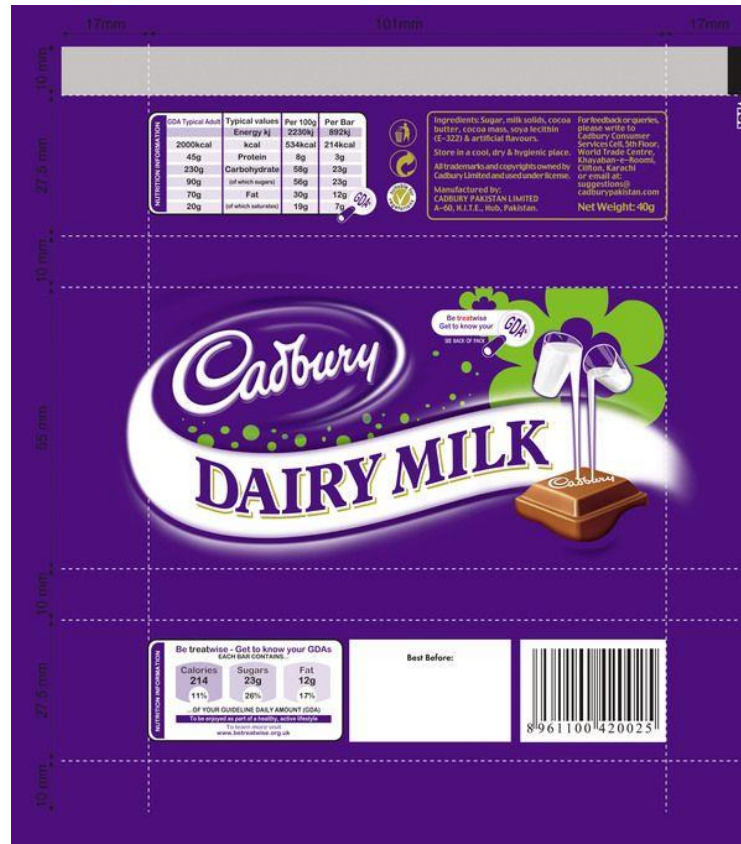
Mrs Cook's Creamy Candy Crunch Bar

DT

Design Brief – To make a chocolate product and packaging that would make Willy Wonka proud.



Design the packaging



Packaging features

Must include

- Name of your chocolate (big and bold)
- Description of your chocolate
- Slogan
- Logo
- Bright colours
- Picture of your chocolate
- Stickers (nutritional information, rainforest alliance, recyclable)
- Stands out
- What its special feature is

Could include

- Promotional offer
- Character
- Barcode
- Health information
- Ingredients
- Price
- Company name/ brand
- Other flavours available

Nutritional information...

Each white chocolate will have

Energy	Fat	Saturates	Sugars	Salt
459kJ 110kcal	6.4g	3.9g	11.9g	0.1g
6%	9%	20%	13%	1%

Each milk chocolate will have

ENERGY	FAT	SATURATES	SUGARS	SALT
429kJ 103kcal	5.3g	3.3g	12.0g	0.05g
5%	8%	17%	13%	1%

% of the Reference Intakes

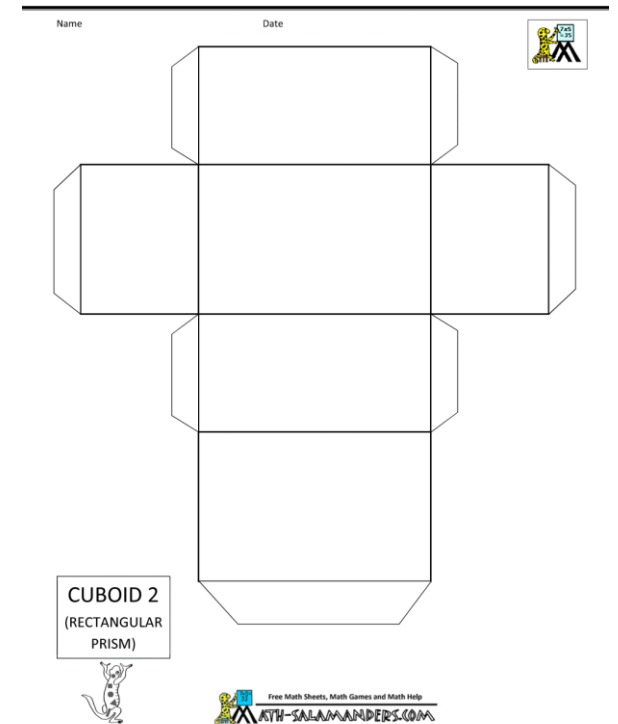
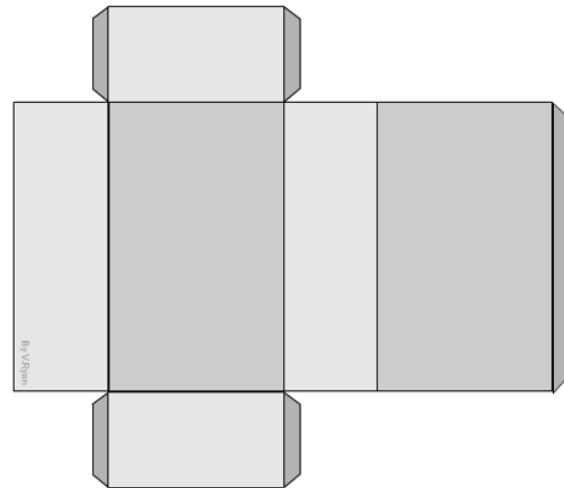
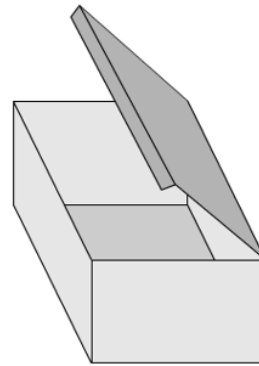
Each dark chocolate will have

Energy	Fat	Saturates	Sugars	Salt
368kJ 88kcal	5.3g	3.2g	8.7g	0.1g
4%	8%	16%	10%	<1%

Ingredients:

- You will first make a paper one so that you can work out which way round the writing will need to be and so you can plan what information goes on each side.

Cut out your paper template and fold into shape. Work out which way up you will need to draw/write on each face and what you want on each face....



We will be making our finished packaging next week so keep your rough paper copy as a template/plan for the design.