



West
Borough
Primary
School

Prospectus 2023-2024



Equality
Responsibility
Respect
Resilience
Challenge



WEST BOROUGH
PRIMARY SCHOOL

Headteacher's Welcome

"I am the newly appointed Head Teacher at West Borough Primary School. I have been a teacher and then Deputy Head Teacher at the school for over 16 years and over that time have got to know our children, families and communities well. I am a firm believer that if children feel happy and safe at school they will learn. West Borough Primary School is a vibrant school, where children are enthusiastic and motivated to achieve endless possibilities. The children are at the heart of every decision we make to ensure that they are happy, confident and that the new opportunities provided for them are relevant to their needs both now and in the future.

Our aim at West Borough is to provide the children with an excited, purposeful, challenging curriculum. This includes the provision of real life and globally relevant learning experiences with the development of skills for learning that will enable our children to become independent and life-long learners. We believe that our children deserve a broad and balanced curriculum with equality of subjects enabling all learners to be challenged and achieve.

We are an inclusive school with a clear set of core values which are 'Equality, Responsibility, Respect, Resilience and Challenge'. Our core values are evidenced daily through our community code and set expectations for the way we expect our whole community to behave.


Our community code: **'Be kind, be safe, be responsible and embrace challenge!'**

The school has a dedicated team that works hard to reach high standards in everything we do and this is further embedded through our successful relationships with parents and carers, the local community and other schools. We firmly believe that education is a partnership between home and school and regard you as an active partner in your child's education and value your interest and support.

Mrs Lisa Edinburgh



Our Core Values



Everything we do in school is underpinned by our Core Values and our Vision.

Equality
Responsibility
Respect
Resilience
Challenge


At West Borough Primary School we instil a respect for others and a fascination with the world around us.

Within our creative environment, we foster life skills.

This gives us the opportunity to learn, take responsibility and to become independent citizens.



Starting School



Choosing the right school for your child is one of the biggest decisions you will make as a parent. At West Borough Primary School, we pride ourselves on the care and support we give to all our pupils, especially when they start school for the first time.

"I am pleased my son attends this School. He was made to feel warm and welcome."

Parent

We believe we offer a range of unique experiences through some of our specialist teachers and the wider opportunities available in our school.

"From the moment they come to school, children are known by all staff so that everyone understands individual children's learning and welfare needs, enabling them to settle quickly."

Ofsted





Learning

Our aim at West Borough is to provide our children with an exciting, purposeful and challenging curriculum.

This includes the provision of real life learning experiences and the development of learning skills that will enable our children to become independent and life-long learners.


“I love the fact it’s child led learning.” Parent

We believe that our children deserve a broad and balanced curriculum with equality of subjects enabling all learners to be challenged and to achieve.

***“Pupils enjoy their school life, especially the opportunities they have to learn through a variety of engaging activities across the core and wider curriculum.”
Ofsted***



Beyond the Classroom



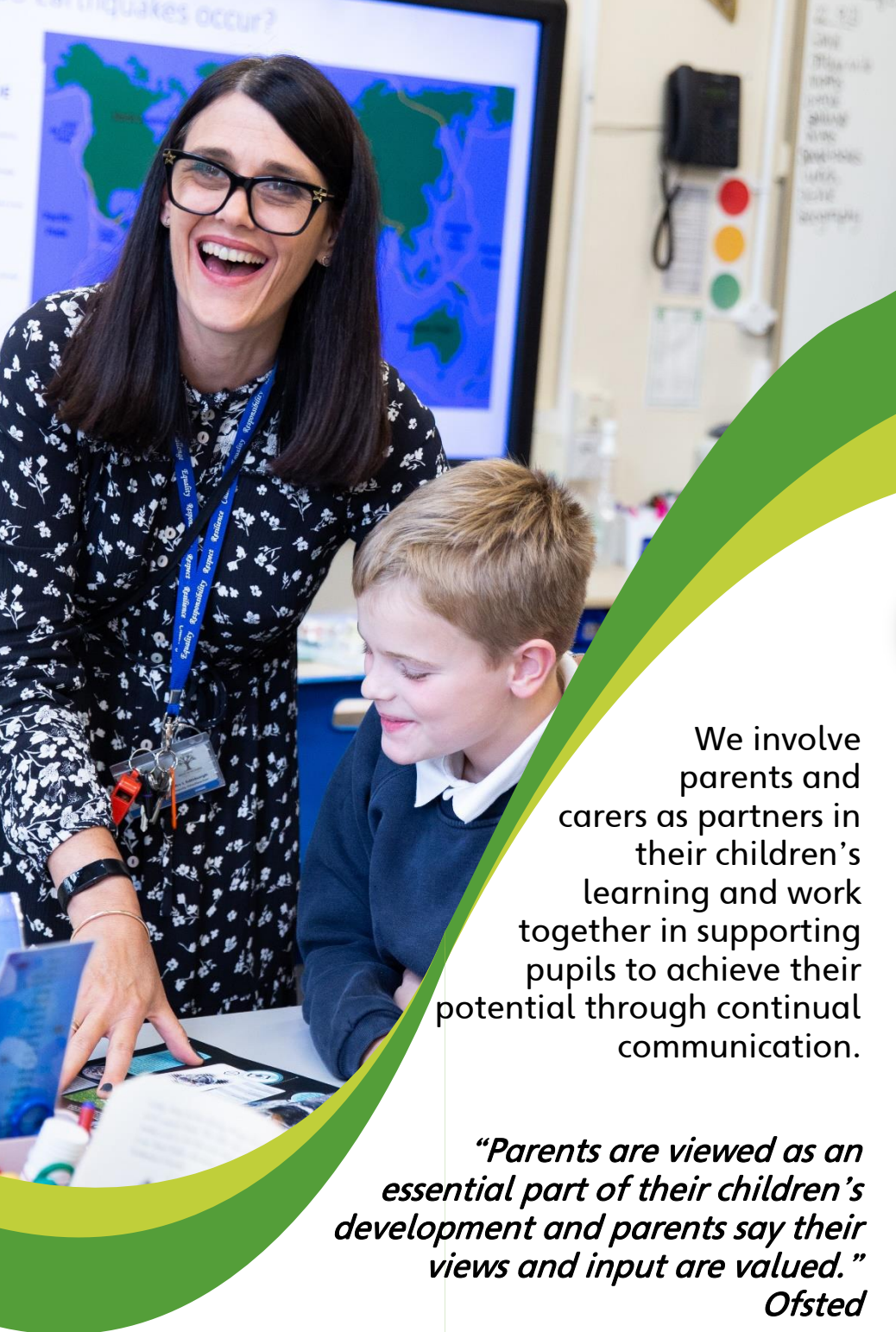
We believe giving children a range of opportunities outside of the classroom develops new skills and offers new experiences.

"The amount of time and energy staff put in is reflected in the children's attitudes to learning."
Parent

From Forest School to music lessons, a residential farm trip to a visiting author; all children are involved in a wide range of activities during their time at West Borough which will help to develop them as individuals.

"It taught me lots of life skills and I experienced jobs that I might like to do when I'm older."
Year 6 pupil after residential.





Working Together

We involve parents and carers as partners in their children's learning and work together in supporting pupils to achieve their potential through continual communication.

"Parents are viewed as an essential part of their children's development and parents say their views and input are valued."
Ofsted

Our highly trained staff are an integral part of your child's journey through the school. Alongside our dedicated team of teachers and teaching assistants we have a large team of specialist staff. This enables us to support all our children and their families in a variety of ways, including children who are more able, have additional needs or have English as an additional language.

"The relationships the staff have with the children are excellent. The school is very child centred." Parent



Admissions

We accept children at any point during the school year, providing we have a space available.

If you have any queries regarding placing your child at our school, please contact us directly on 01622 726391 or office@west-borough.kent.sch.uk

We will always be happy to make you an appointment to come and visit our school.

Early Years Foundation Stage

Children start school in the September following their 4th birthday.

The admission round opens in November for the following September and applications are made online at www.kent.gov.uk/ola

If you have any difficulty with the process, please do not hesitate to contact us as we will be happy to help with the application process.



Contact us

West Borough Primary School,
Greenway, Maidstone,
Kent, ME16 8TL

Tel: 01622 726391

Email: office@west-borough.kent.sch.uk